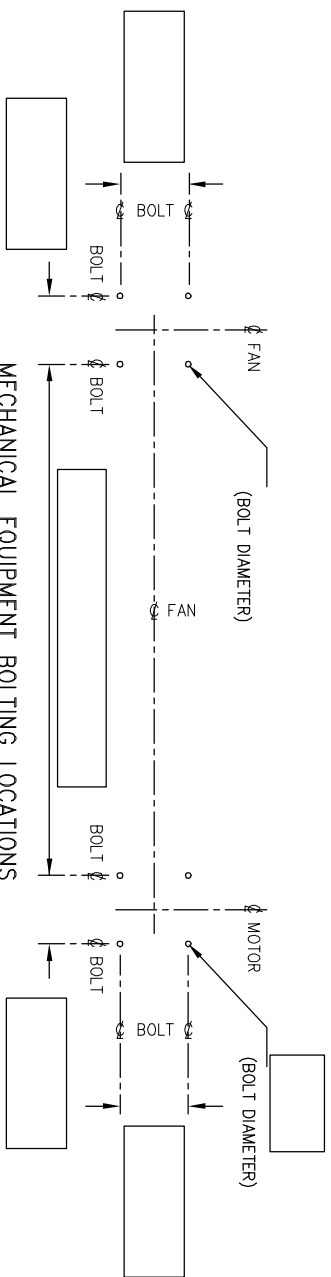
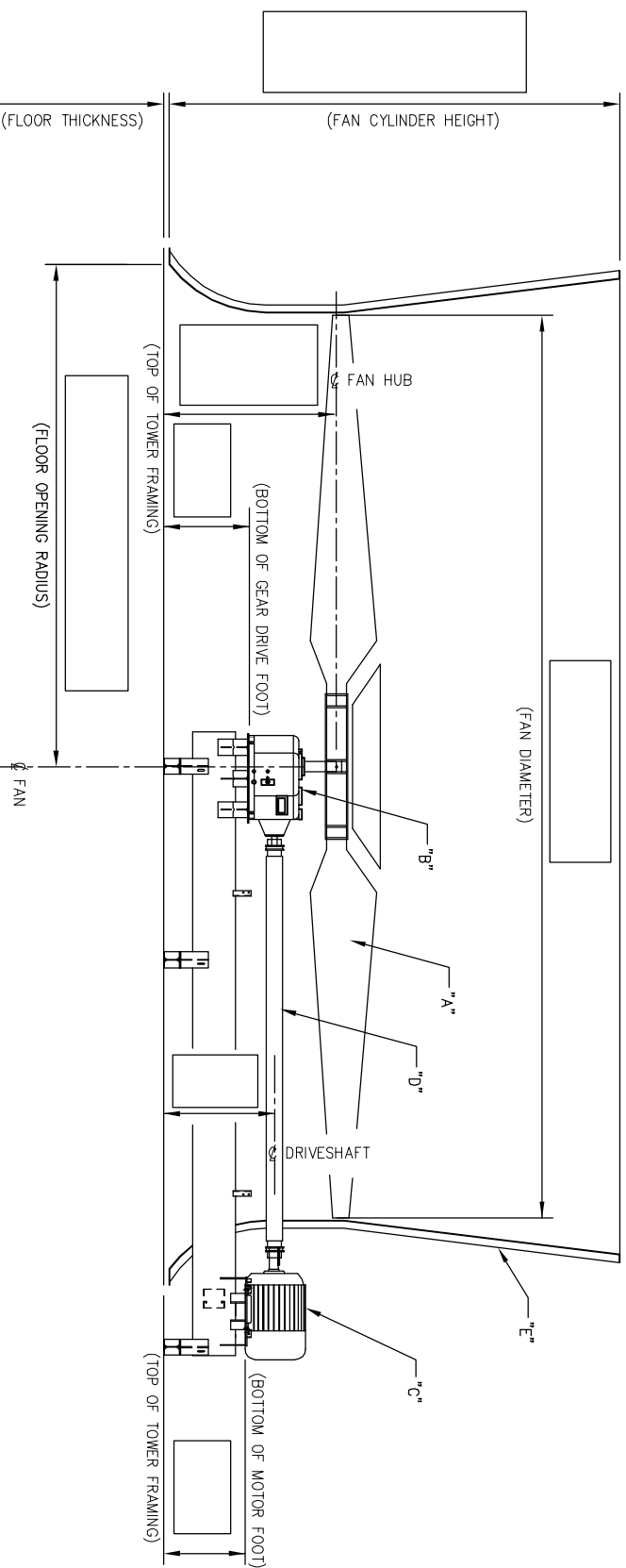


MECHANICAL EQUIPMENT ELEVATION WITH SUPPORT BELOW FLOOR



MECHANICAL EQUIPMENT BOLTING LOCATIONS



MECHANICAL EQUIPMENT ELEVATION WITH SUPPORT ABOVE FLOOR

MECHANICAL INFORMATION REQUIRED

A) FAN DATA

MADE BY: _____
 MODEL: _____
 NUMBER OF BLADES: _____
 BLADE TYPE: _____

B) GEARBOX DATA

MADE BY: _____
 MODEL: _____
 GEAR RATIO: _____

C) MOTOR DATA

MADE BY: _____
 FRAME: _____
 HORSE POWER: _____
 REVS. PER MIN.: _____
 PHASE: _____
 CYCLES: _____
 VOLTS: _____

D) DRIVESHAFT

MADE BY: _____
 MODEL: _____
 LENGTH: _____
 FINISH: _____
 MOTOR BORE: _____
 MOTOR KEYWAY: _____
 GEARBOX BORE: _____
 GEARBOX KEYWAY: _____

E) FAN CYLINDER

MADE BY: _____
 MODEL: _____
 HEIGHT: _____
 NO. OF SEGS.: _____
 ANCHORAGE: (DESCRIBE IN DETAIL) _____

TOWER FRAMING INFORMATION REQUIRED

- 1) TOWER STRUCTURE FRAMING MEMBERS ARE (WOOD OR FIBERGLASS)
- 2) COLUMN CENTERS TRANSVERSE: _____
LONGITUDINAL: _____
- 3) FAN DECK GIRTS SIZES TRANSVERSE: _____ (ONE OR BOTH) SIDE(S) OF COL.
LONGITUDINAL: _____ (ONE OR BOTH) SIDE(S) OF COL.
- 4) GIRT LOCATION TRANSVERSE GIRTS ARE (ABOVE OR BELOW) LONGITUDINAL GIRTS
- 5) CENTER OF FAN LOCATION TRANSVERSE: (CENTER OF COL. OR CENTER OF BAY OR OTHER)
LONGITUDINAL: (CENTER OF COL. OR CENTER OF BAY OR OTHER)
- 6) DRIVESHAFT ORIENTATION DRIVESHAFT RUNS (TRANSVERSE OR LONGITUDINAL OR 45°)

SPECIAL NOTES:

FILL IN ALL POSSIBLE BLANKS.
 PROVIDE AS MANY SKETCHES, DRAWINGS AND PICTURES AS POSSIBLE.



EvapTech, Inc.
 8331 Nieman Road
 Lenexa, KS 66214
 Ph: (913) 322-5165
 Fax: (913) 322-5166

INFORMATION REQUIRED FOR REPLACEMENT
 MECH. EQUIP. COMPONENTS OR SUPPORTS

DRAWN BY: AGHS	CHECKED BY: RDF	REV'D BY:	REV DATE:	REV CHECKED:
DATE: 6/15/2005	APPROVED BY: JHA	ORDER NUMBER:	SCALE 1 = 64	DRAWING NUMBER: 05-20524

CONFIDENTIAL: THIS DOCUMENT IS THE PROPERTY OF EVAPTECH, INC. IT SHOULD NOT BE DISCLOSED WITHOUT PRIOR WRITTEN AUTHORIZATION.