

Project Spotlight

City of Ames

EvapTech recently completed the replacement of two (2) cooling towers for the City of Ames, IA. The new fiberglass crossflow towers will serve Units 7 and 8 at the city-owned power plant, and replace 35+ year old wood towers that could no longer meet the plants needs as they transition from coal to gas fired operation. The Unit 8 tower (3-cells) had to remain in service while



the Unit 7 tower

(2-cells) was replaced, in-

cluding the abatement of asbestos walls and louvers. Since the two towers were end-to-end, the demolition had to be conducted in a controlled manner including the installation of temporary end walls so that the Unit 8 tower could remain in service.



Photo courtesy of Ames Tribune

In This Issue

- From the Corner Office
- Wet Bulb: Entering vs. Ambient
- Meet the ETAP Team
- New Representative: Integ Services
- Sales News: POWERGEN 2015
- Product Development: TechClean Fills
- Upcoming Projects: OG&E Muskogee, Fuji Japan Binary Geothermal

Employee Spotlight:

Randy Beery

Procurement Manager



Randy is one of those people that everyone knows or should know across the EvapTech scene. Randy has been in the cooling tower business since 1979 in many positions. Randy was the 8th employee of EvapTech, joining in February of 2005. As a part of the EvapTech Operations team, he is responsible for procurement and logistics for virtually all materials and components required to build an EvapTech tower. Randy and his lovely bride Kris have been married for 32 years, with two sons keeping them very busy. An interesting and little known fact about Randy is that he is a long lost relative of Hollywood legends Noah and Wallace Beery. The next time you see EvapTech quality materials arriving on a job site, remember Randy.

From the Corner Office



EvapTech is pleased to introduce the EvapTech Quarterly newsletter. With our continuous growth it became increasingly important to establish a method to communicate company activities with employees, representatives, and customers to allow a better understanding of our people, our projects, and our products. In this first installment we turn the spotlight on Randy Beery, the EvapTech Procurement Manager and recent recipient of the EvapTech Eagle Impact Award. Randy has been in the cooling tower industry for parts of five decades and joined EvapTech almost immediately after our inception. We also explore the recently completed City of Ames, IA project to replace two crossflow cooling towers and look ahead to the OG&E Unit 6 Tower Replacement Project and Fuji Japan Binary Geothermal Power Project; our first installation in Japan. We welcome our newest representative, INTEG Services in Texas who was very active at the recent PowerGen conference in Las Vegas, NV where EvapTech, and the whole of Evapco Power, rolled out our new interactive booth with great success. Finally, we offer a brief summary of the TechClean family of fills which are at the heart of our emphasis on continuous research and development. These are exciting times at EvapTech as we continue to grow our market position by moving the industry forward through a commitment to R&D along with a demonstrated dedication to our customer's success. Welcome to the EvapTech Quarterly, we invite you to share our growth as part of the EvapTech family.

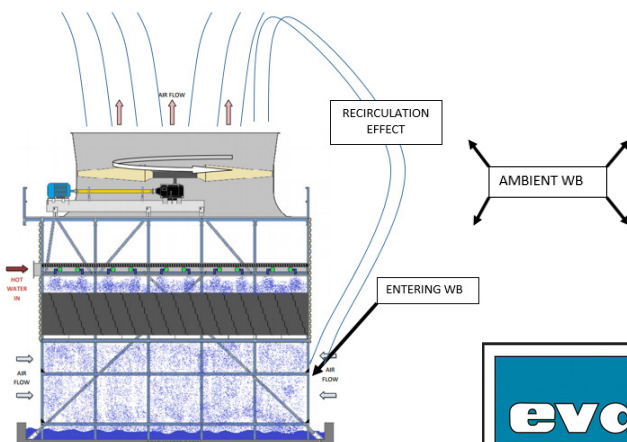
Don Dobney

President, EvapTech, Inc.

Technical Tidbit

Wet Bulb: Ambient vs. Entering

The wet bulb temperature is the temperature you feel on your finger if you dipped it in water and blew on it. In the cooling tower world, it is the atmospheric condition that controls the performance of the cooling tower and is therefore vitally important in the sizing of cooling towers. Because of recirculation effects, the ambient wet bulb temperature is often less than the wet bulb temperature at the cooling tower's air inlet (entering wet bulb). Entering wet bulb is the basis of all modern test codes including CTI ATC-105. See diagram below:



World Spotlight

Meet the ETAP (EvapTech Asia-Pacific) Team

Back Row: Andrew Law, S.Y. Gun, Isaac Ho, J.P. Libert, Mark Muder, Raymond Ho, Don Dobney, Chee Meng Lin, T.S. Wong

Front Row: Adnan Hassan, Mohd Azmi, Candis Chow, Ann Mathiew, Carmen Wong, Catherine Choong, Brenda Lit, Ellis Pheng, Ron Gomes, Dominic (KEE) Ng, Boyle Foong



ETAP — Kuala Lumpur, Malaysia Office



Sales & Marketing News



INTEG Services joins EvapTech

INTEG Services, LLC, a Cypress, Texas company has recently joined EvapTech as a new representative group. INTEG's President, Mr. Bruce Triplett, brings us many years of experience in the power industry throughout the south central United States. Bruce's background includes many aspects of power plant equipment sales and management.

Evapco Power @ POWERGEN 2015

EvapTech partnered with our sister company, Evapco BLCT to attend PowerGen 2015 in Las Vegas, NV. This year marked the debut of Evapco Power's "clean look" exhibit which provides greater openness and functionality, plus the continuation of our world famous hourly Tech Toy giveaway promotion. This year's prizes included iPad 4, GoPro cameras, and Dell Surface laptops. Many thanks to all our loyal customers, reps and friends that stopped by to check us out!



Product Development Update

TechClean Fill Family



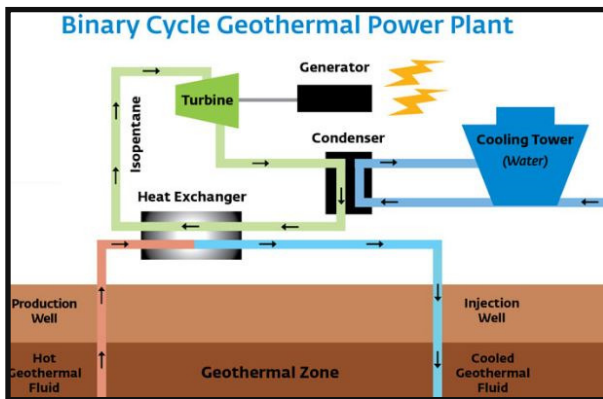
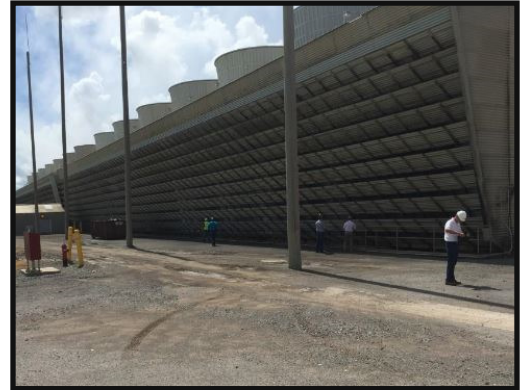
EvapTech has introduced the **TechClean** family of high performance, low fouling fills, strengthening our position as an industry leader in fill development. These fills are designed to provide ultimate performance over a wide range of operating conditions. As demonstrated by CTI Standard 202 results, EvapTech is committed to providing fully rated products. The entire **TechClean** lineup has been third party tested with **100%+** results. The latest development from EvapTech is FM Approved **TechClean** fills produced from our exclusive **Franklintm** zero flame spread material. Ask your local EvapTech representative to review what TechClean fill can do to improve the performance and reliability of your existing tower.



Upcoming Projects

Oklahoma Gas & Electric

EvapTech is excited to announce the award of a 14-cell replacement cooling tower that serves Unit 6 of Oklahoma Gas & Electric's (OG&E) Muskogee Plant. This challenging project includes the demolition and disposal of the old wood crossflow tower, and the design, supply and installation of a new fiberglass framed crossflow tower. The new tower is 2-stories taller and represents a thermal improvement of over 20% compared to the existing tower. The project is scheduled to occur during OG&E's upcoming Spring outage and will be complete by May 2016.



Fuji Japan Binary Geothermal

Fuji Electric America awarded EvapTech a 3 cell cooling tower for a geothermal project in December. Location of the 5 MW binary power plant is in Oita, Japan, to be operational by March 2017. Binary power generation is a system using a motive fluid with a low boiling point (such as pentane). Power can be generated using lower-temperature hot water (100°C - 150°C) that is returned underground after use in geothermal power generation. This will be the first EvapTech cooling tower installation in Japan.

Contact EvapTech

www.evaptech.com

World Headquarters
8331 Nieman Road
Lenexa, KS 66214
P: 913-322-5165
F: 913-322-5166
marketing@evaptech.com

EvapTech Asia-Pacific, Sdn. Bhd.
B-6-1, IOI Boulevard
Jalan Kenari 5,
Bandar Puchong Jaya
47170 Puchong
Selangor Darul Ehsan
Malaysia
(60-3) 8070-7255
marketing-ap@evaptech.com

EvapTech Shanghai Cooling Tower Co., Ltd.
marketing@evaptech.com

Evapco Power Mexico, S. De R.L. de C.V.
marketing@evaptech.com

HVAC Sales Contact
George Nicely, gnicely@evaptech.com

Industrial & Power Sales Contacts

Midwest US
Darin Baugher, dbaugher@evaptech.com
Gulf Coast / Southeast US
Rich Forster, rforster@evaptech.com
Dave Simac, dsimac@evaptech.com
Western US
Robert King, rking@evaptech.com
Northeast US
Darryl Miller, dmiller@evaptech.com

