

Project Spotlight

OG&E Muskogee

EvapTech recently completed a challenging cooling tower replacement project for a 14-cell crossflow cooling tower. The new Series EX cross-flow tower serves Unit 6 of Oklahoma Gas & Electric's (OG&E) Muskogee Plant. The turnkey scope included the demolition and disposal of the old wood crossflow tower, and the design, supply and installation of a new fiberglass framed tower. Improved features include a new grade level manifold system, which eliminates the need to support large diameter header piping on top of the tower. The innovative distribution scheme now provides OG&E the flexibility to operate the tower as if it were (2) 7-cell towers. EvapTech also installed elevated hot water basin covers to reduce damaging algae growth caused by the intense Oklahoma sun.



The new tower is 2-stories taller than the tower it replaced, and successfully passed a 3rd party CTI test this summer providing a full 25% thermal improvement over the old design. EvapTech completed the work safely and on-time, utilizing up to 110 workers and approximately 60,000 man-hours.

CTI News

The Cooling Technology Institute (CTI) recently published the performance test results per STD-202 through 9/30/2015. EvapTech was the only manufacturer to maintain a perfect testing record! Please visit the CTI website to learn more about the STD-202 program: www.cti.org.

Participating Manufacturer	CCS	EvapTech	SPX
Period:	8/12/13 - 8/11/15	6/11/13 - 9/30/15	8/12/13 - 8/11/15
Tests at or above 100%	NA	100%	80%
Tests at or above 95%	NA	100%	100%

NA = Minimum # of required tests not met

In This Issue

- From the Corner Office
- Employee Spotlight: Mike Brocato
- Wood to FRP Conversions
- New Representative: PA&C
- Trade Shows: PowerGen 2016
- Product Dev: Access Options
- Featured Projects: Oregon Clean Energy, Orlando Int. Airport

From the Corner Office



As 2016 continues, EvapTech is pleased to once again spotlight a challenging project with an extremely tight schedule performed for Oklahoma Gas & Electric. When others said it could not be done, EvapTech exceeded expectations by performing the entire 14-cell tower startup on the 41st day following the start of the outage. Then just a few weeks later the tower was tested by a certified CTI agency at well over design thermal capability, continuing EvapTech's perfect CTI STD-202 track record of 100% tower performance tests. Want to learn more about EvapTech's capabilities, please join us at the upcoming PowerGen conference in Orlando. It is sure to be a good time as we continue our hourly technology drawings and feature our newly expanded open concept booth.

Don Dorney

President, EvapTech, Inc.

Employee Spotlight

Mike Brocato

Project Manager

Mike joined EvapTech in September 2015 after working 9 years at JCI Industries in Lee's Summit. He had previously held positions ranging from Branch Manager to Project Manager.

With a degree in Construction Science & Management from Kansas State University and work experience in the construction field since the age of 13, Mike excels in time management, organization and direct communication. Mike prides himself in making sure all projects are on time and under budget.

Mike and his wife Natalie have their hands full with their daughter Juliana and are expecting a baby boy in November. When they aren't spending time with family and friends, they enjoy watching the Kansas City Royals and KSU Wildcat Football.



Technical Tidbit

Wood to FRP Structural Conversions

The use of FRP materials for repairs to existing wood cooling tower structures has become a common practice in the cooling tower industry. FRP structural members are now made in the same dimensions of typical wood members, therefore making direct replacement equal to or better than the original loading design. The FRP advantages are as follows:

- Longevity in cooling towers
- Reduction of column splices
- Impervious to cooling tower wet-dry cycles
- Flame spread – 25 or less
- Manufactured & fabricated in a controlled environment
- Lighter weight, easier to handle
- EvapTech offers a 10 year warranty of FRP structure
- EvapTech is the only cooling tower manufacturer with control of design, manufacturing, fabrication, and construction



Sales & Marketing News



PA&C joins EvapTech

Process Alternatives & Combustion (PA&C) recently joined EvapTech as its power and industrial representative for Michigan (LP), NW Ohio and NE Indiana. PA&C is led by founder and president George Joniec and brings a wealth of experience with utility and EPC clients. Among the key accounts covered by PA&C are Black & Veatch (Ann Arbor), HDR, Consumers Energy, DTE and Lansing Board of Water & Light. While George was already part of the Evapco family as the area representative for Evapco BLCT, EvapTech is honored and excited to also have him as part of the EvapTech family.

PowerGen 2016 - Orlando, FL

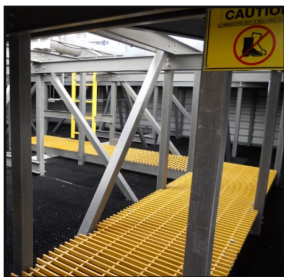
PowerGen 2016 is approaching, and once again EvapTech will partner with our sister company Evapco BLCT to exhibit as Evapco Power at the Orange County Convention Center in Orlando, FL. This year's show is slated for December 13th – 15th and will again feature our inviting "clean look" exhibit, plus the continuation of our world famous hourly Tech Toy giveaway with the latest technology from Apple, Dell and others. We look forward to seeing our many customers, reps and friends in Orlando, Booth 4422!



Product Development Update



Gearbox Access Platform



Plenum Access Walkway

Cooling Tower Maintenance Access Options

EvapTech takes immense pride in providing industry leading thermal performance and structural integrity, but also realizes that the day-to-day tower operators are more likely to be concerned about the tower's ease of maintenance. To satisfy those needs, EvapTech offers a wide variety of maintenance access options to allow operators to safely and quickly service the mechanical equipment on the tower.

The tower's thermal performance slightly suffers from the addition of obstructions in the path of airflow, but that impact is often worth the improved maintenance access that these walkways and platforms provide. EvapTech thoroughly understands the thermal impact and can account for the walkway/platform impact on new towers, or advise of the minor temperature delta for aftermarket installations.



Featured Projects

Oregon Clean Energy

EvapTech recently completed an 11 cell counterflow tower under contract with Black & Veatch for the Oregon Clean Energy Center in Oregon, Ohio. The 869 MW combined cycle plant is scheduled to begin commercial operation in June 2017. Although construction began in the heart of the Ohio winter, EvapTech was able to complete the tower on time by utilizing a “stub-girt” construction method. While the material costs are slightly higher with this installation method, the improved labor efficiency and improved overall safety of the design make it a worthwhile investment for larger cooling towers like the one provided for Oregon Clean Energy.



Orlando Airside 4 Terminal

EvapTech recently completed a 3 cell FM Approved cooling tower for the Orlando International Airport’s new Airside 4 Central Chiller Plant. EvapTech’s FM Approved Series ES cooling tower offered the Airport the reliability it desired for protection against not only fire, but also hurricane force winds. The airport’s growing cooling needs required the chiller plant to be built on land reclaimed from the adjacent lake. EvapTech worked closely with the Engineer and Architect to minimize the tower footprint, save room for a future cell, and service the 4,200 Ton load.

Contact EvapTech

www.evaptech.com

World Headquarters

8331 Nieman Road
Lenexa, KS 66214
P: 913-322-5165
F: 913-322-5166
marketing@evaptech.com

EvapTech Asia-Pacific, Sdn. Bhd.

B-6-1, IOI Boulevard
Jalan Kenari 5,
Bandar Puchong Jaya
47170 Puchong
Selangor Darul Ehsan
Malaysia
(60-3) 8070-7255
marketing-ap@evaptech.com

EvapTech Shanghai Cooling Tower Co., Ltd.

marketing@evaptech.com

Evapco Power Mexico, S. De R.L. de C.V.

marketing@evaptech.com

HVAC Sales Contact

George Nicely, gnicely@evaptech.com

Industrial & Power Sales Contacts

Midwest US

Darin Baugher, dbaugher@evaptech.com

Gulf Coast / Southeast US

Rich Forster, rforster@evaptech.com

Dave Simac, dsimac@evaptech.com

Western US

Joe Padilla, jpadilla@evaptech.com

Northeast US

Darryl Miller, dmiller@evaptech.com



A wholly owned subsidiary of



Social Media

